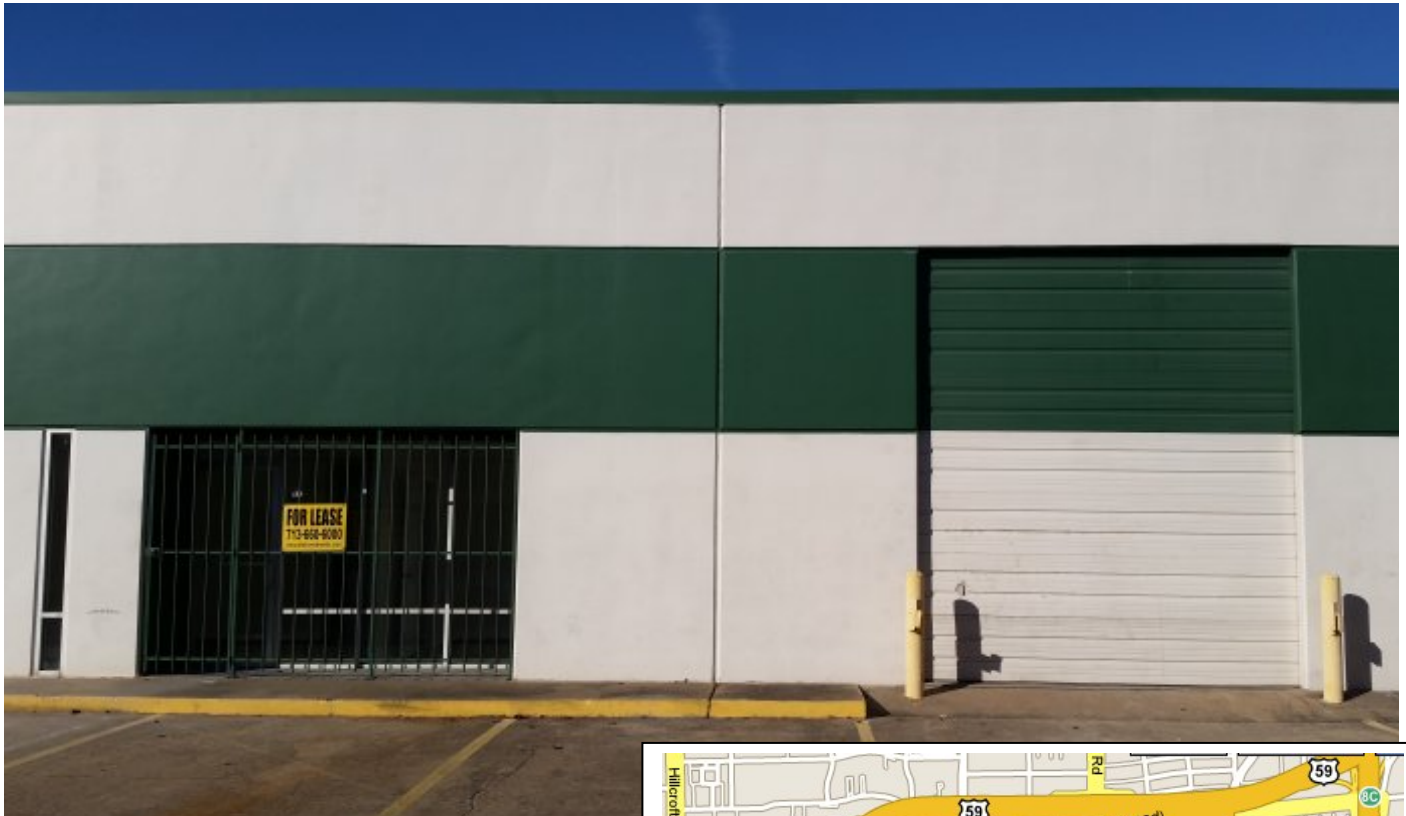


For Lease

5,000 Sq. Ft.

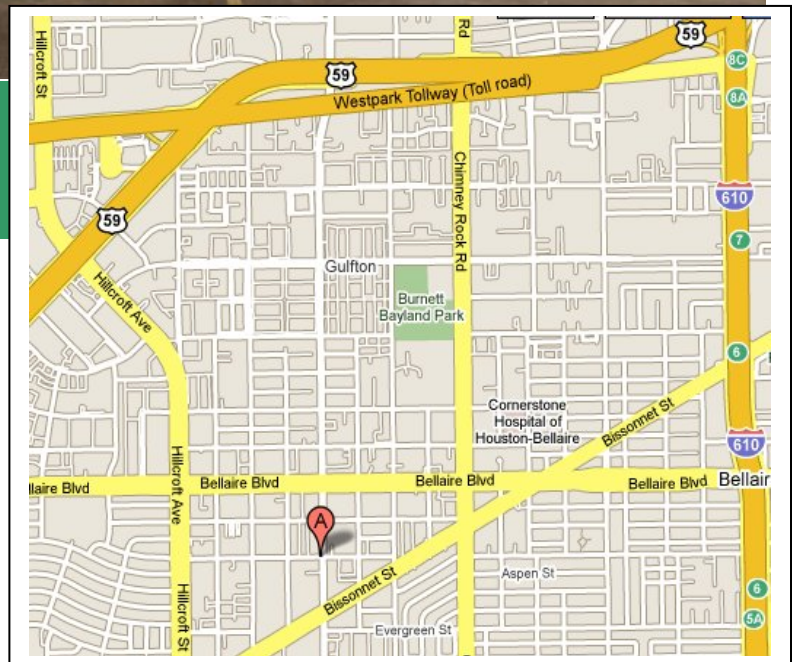


5904 Jessamine, A-13  
Houston, Texas

- Key Map: **531J**
- Square Feet: **5,000**
- Offices/RR: **3 Offices, 2 RR**
- Overhead Doors: **Two 12' X 14'**
- Electrical Service: **120/240 with 3 Phase disconnect available**

Great location in Southwest Houston with easy access to HWY 59, and 610 Loop.

**Samuel L. Bryant Investments**  
Office Warehouse for Lease



FOR ADDITIONAL INFORMATION OR TO SCHEDULE A TOUR, PLEASE CONTACT:

**Jeremy Bryant or Ken Keschinger**  
[info@slbinvestments.com](mailto:info@slbinvestments.com)  
**713-660-6000**

## NEWLY CONSTRUCTED OFFICES!

Newly constructed in 2017, these offices include:

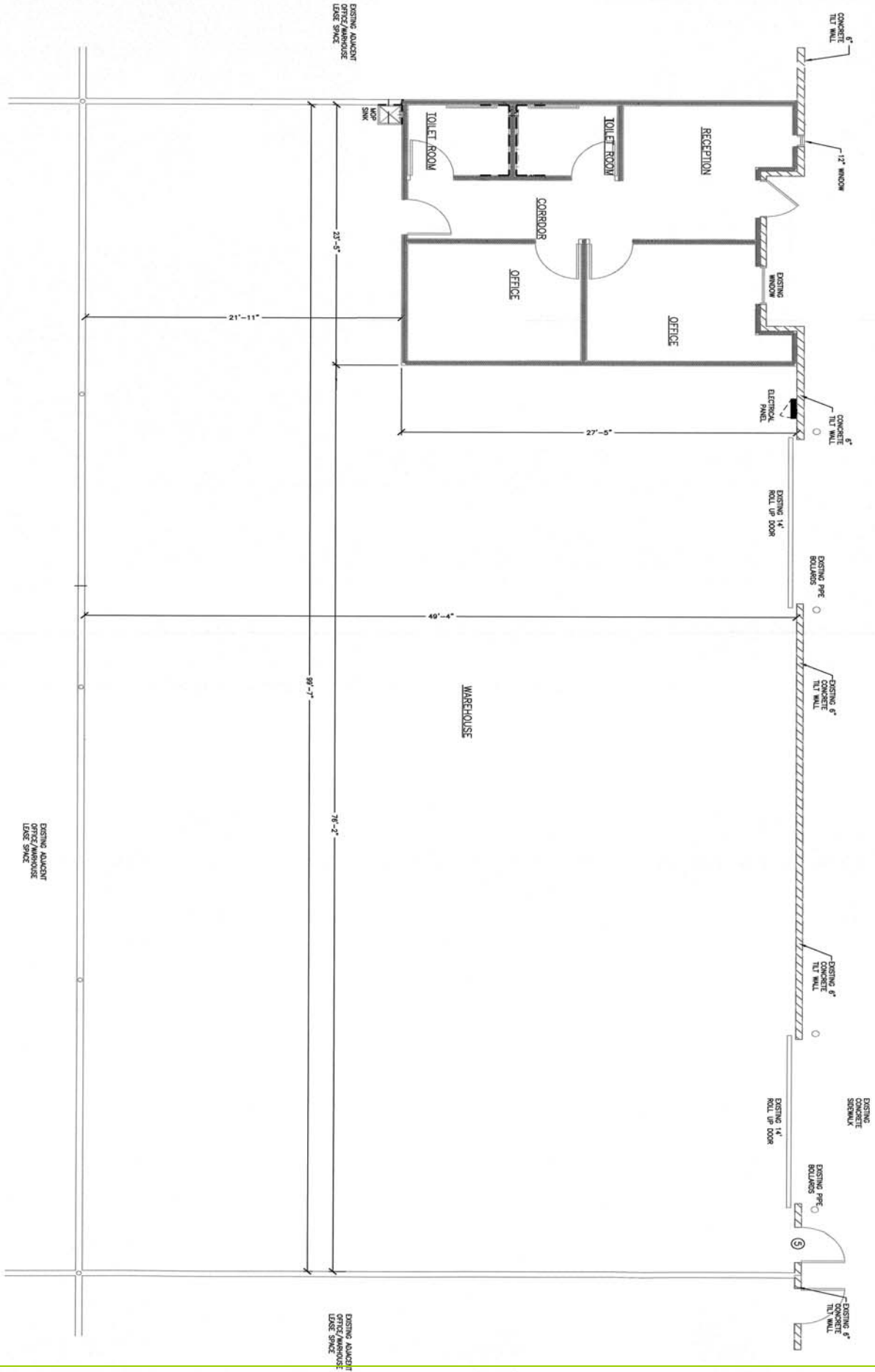
- Porcelain Plank Flooring
- NEW FIXTURES (HVAC, Plumbing, Electrical)
- 9' Tall Office Ceilings / Approximately 17' Tall Warehouse Clear Height
- Mop Sink in Warehouse
- Security Bars
- ADA Compliant Restrooms
- 3 Phase Ready
- Cat 6 Wiring in Offices



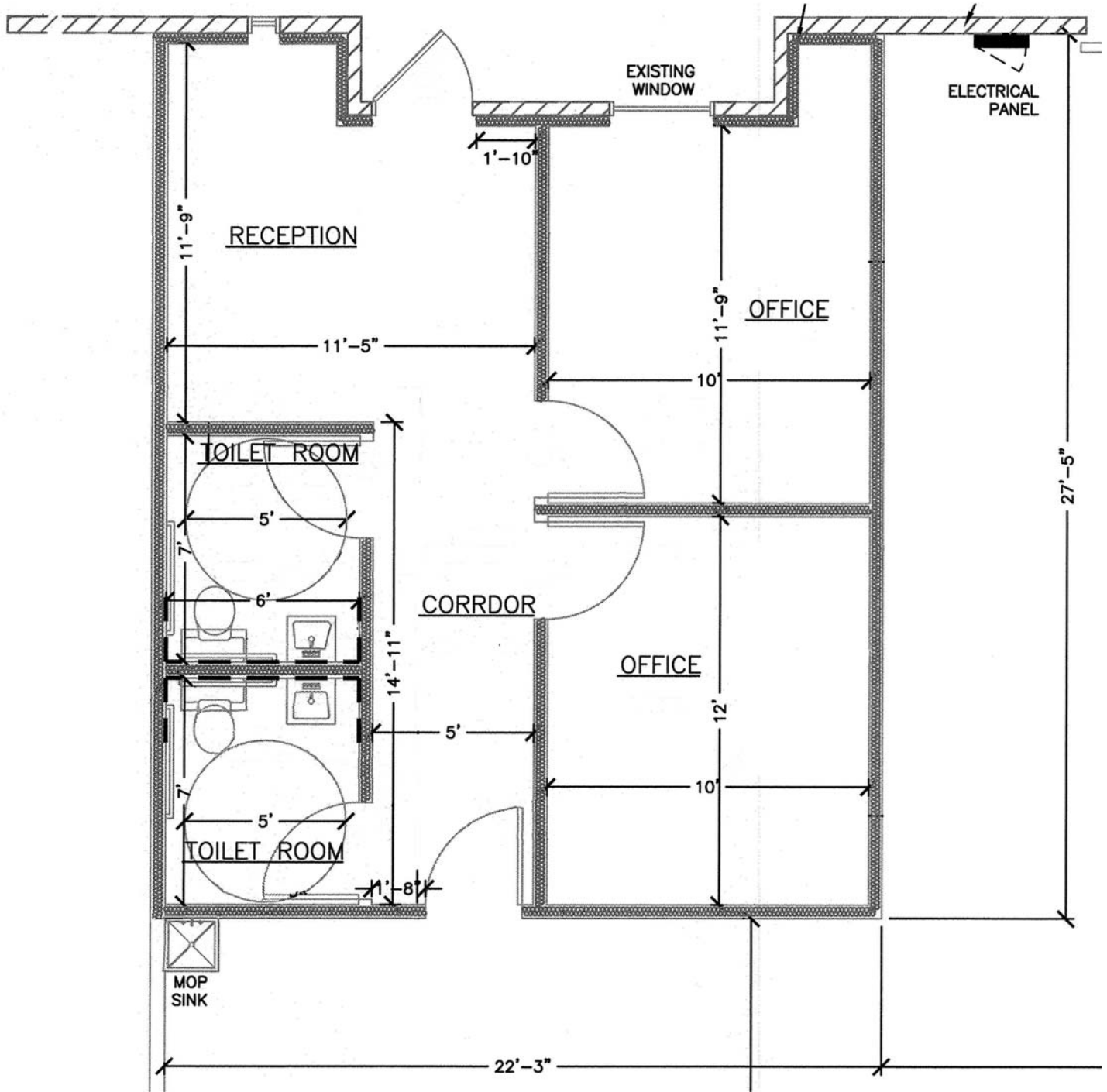


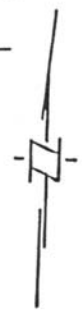
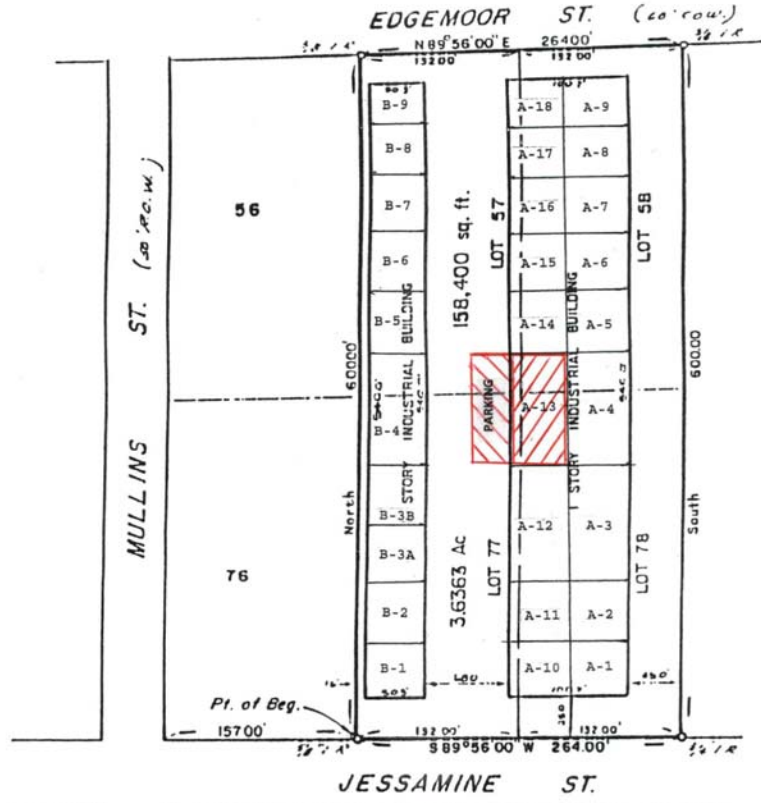


# WAREHOUSE AND OFFICE



# OFFICE CLOSE-UP





STATE OF TEXAS  
COUNTY OF HARRIS

DATE JULY 12, 1979  
SCALE 1" = 100'

Survey of Lots 57, 58, 77, & 78, Block 4, Westmoreland Farms,  
Section Second, as recorded in Vol. 4, Page 21, Harris County Map Records,  
Harris County, Texas



I, F. G. Huffman, a registered Public Surveyor in the State of Texas, hereby certify that this plat was made from an actual survey on the ground by me or under my direction, and that no encroachments exist at the time of this survey unless reflected on the above plat and that said plat is true and correct to the best of my knowledge and belief.

F. G. Huffman  
Registered Public Surveyor No. 1682 *F. G. Huffman*

**F. G. HUFFMAN & ASSOCIATES**  
8302 Cheswick Drive  
Houston, Texas 77037  
666-6644 447-7002

